

SHEN ZHEN SHI HONGZHOU OPTOELECTRONICS TECH CO.,LTD

Part Number: G525RC

Page: 1/3

1.SPECIFICATIONS

(1) Absolute Maximum Rating (Ta=25℃)

| Item                          | Symbol | Absolute Maximum Rating | Unit |
|-------------------------------|--------|-------------------------|------|
| Forward Current               | IF     | 20                      | mA   |
| Peak Forward Current          | IFP    | 50                      | mA   |
| Reverse Voltage               | VR     | 4                       | V    |
| Power Dissipation             | PD     | 40                      | mW   |
| Electrostatic Discharge (HBM) | /      | /                       | V    |
| Operating Temperature         | TOP    | -40℃~80℃                | ℃    |
| Storage Temperature           | TSTG   | -40℃~100℃               | ℃    |
| Lead Soldering Temperature    | TSOL   | 260℃ FOR 3 SECONDS      |      |

IFP Conditions: Pulse Width≤10msec.and duty ≤1/10

(2) Initial Electrical/Optical Characteristics (Ta=25℃)

| Item                      | Symbol  | Condition | Min | Typ | Max | Unit |
|---------------------------|---------|-----------|-----|-----|-----|------|
| Forward Voltage           | VF      | IF=20(mA) | 1.9 | /   | 2.1 | V    |
| Reverse Current           | IR      | VR=5(V)   | /   | /   | 20  | μA   |
| Viewing Angle             | 2θ1/2   | IF=20(mA) | /   | 30  | /   | deg  |
| Luminous Intensity        | IV      | IF=20(mA) | 400 | /   | 600 | mcd  |
| Dominant Wavelength       | λ       | IF=20(mA) | 590 | /   | 595 |      |
| Recommend Forward Current | IF(Rec) | /         | /   | 20  | /   | mA   |

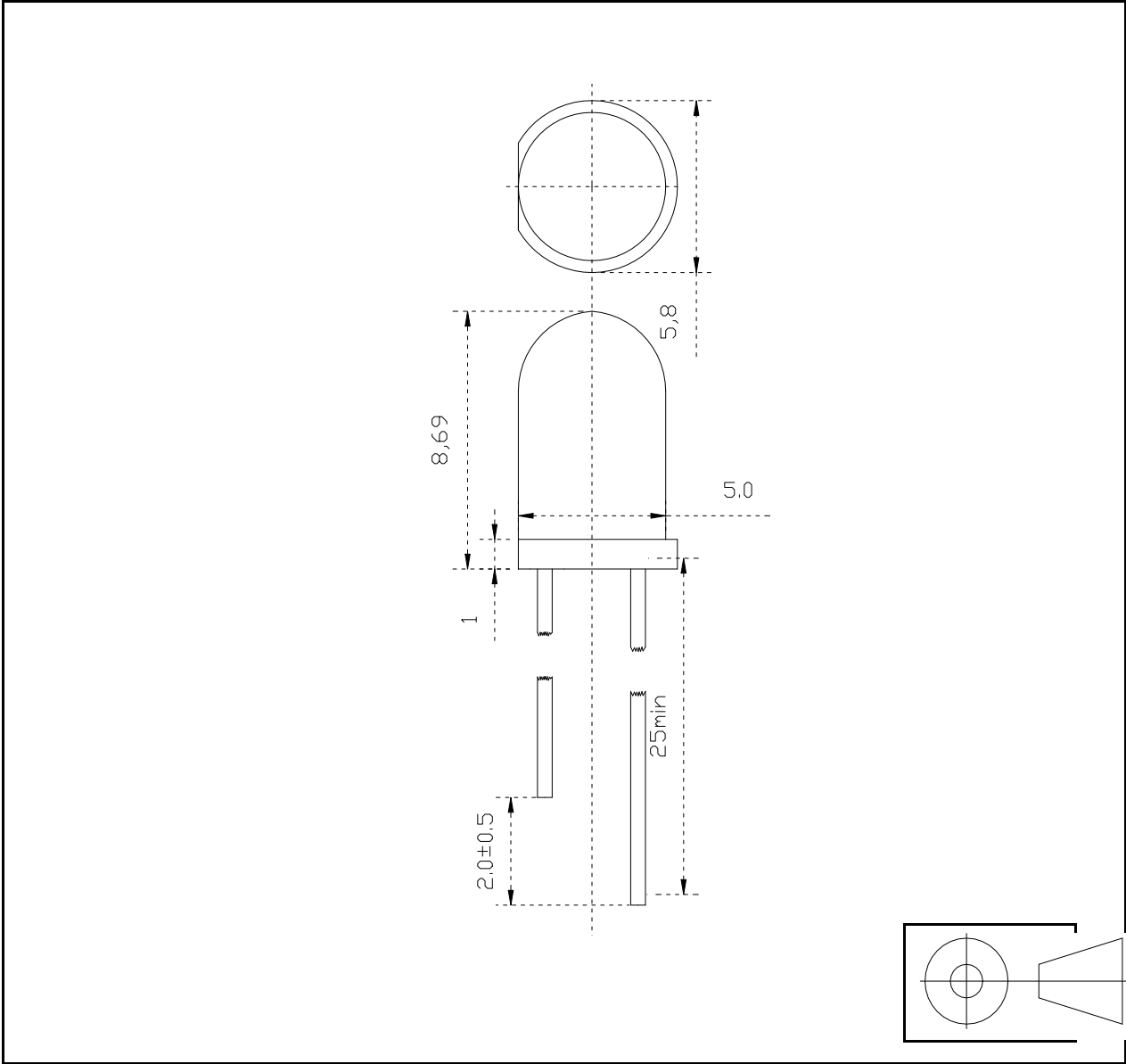
2.TYPICAL INITIAL OPTICAL/ELECTRICAL CHARACTERISTICS

3.OUTLINE DIMENSIONS AND MATERIALS

Material as follows: Resin :Epoxy

Lead frame:Ag plating Copper alloy

■ Package Dimension:



| Part Number | Chip     |                | Lens Color |
|-------------|----------|----------------|------------|
| F32G3       | Material | Emitting Color |            |
|             | AlGaInp  | YELLOW         | YELLOW     |

- NOTES:
- 1.All dimension are millimeters
  - 2.Tolerance is  $\pm 0.25$ mm unless otherwise noted.

SHEN ZHEN SHI HONGZHOU OPTOELECTRONICS TECH CO.,LTD

## ■ Typical Electro-Optical Characteristic Curves:

Fig1.Forward Current vs.Forward Voltage

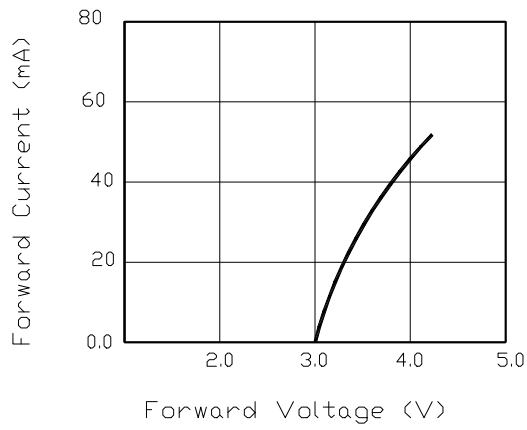


Fig2.Relative Intensity vs. Forward Current

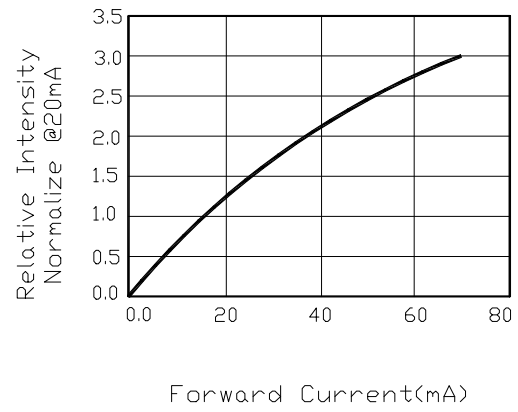


Fig3.Forward Voltage vs. Temperature

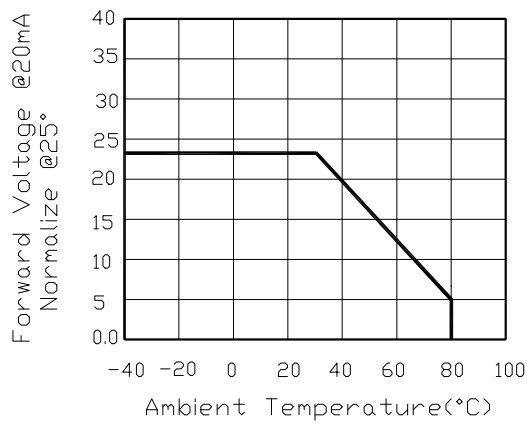


Fig4.Relative Intensity vs. Temperature

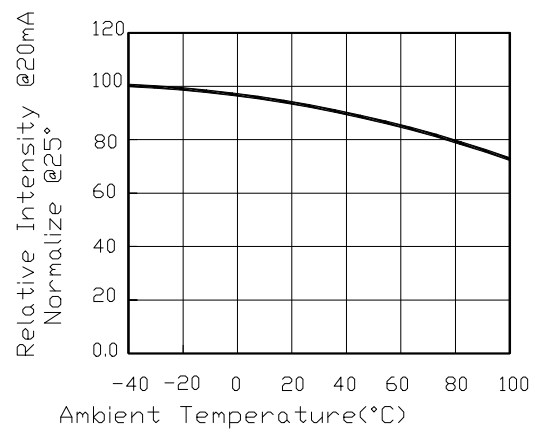


Fig5.Relative Intensity vs. Wavelength

